



2021 ANNUAL REPORT

REIMAGINING. REOPENING. REINSPIRING.





Letter from the Director

As the pandemic continued, so did PRI's adaptation to it, as well as our determination to fulfill our mission to our diverse audiences. This success in adversity – the fact that we didn't just survive, but actually advanced on several fronts—is a testament to the resilience and dedication of our extraordinary staff and the generosity and loyalty of our donors.

Over the past year, PRI's online educational content expanded still further and in many directions. In calendar 2020, our websites were viewed by more than 600,000 people, three times the number in 2019; for the fiscal year, we had more than 800,000 viewers. We offered a full menu of online programs for K-12 classes in central New York. We opened two new major exhibits – online and in the Museum of the Earth: a temporary exhibit on women in American paleontology, and a permanent exhibit on climate change, both of which have received wide praise. We reopened the Museum of the Earth to visitors in August 2020 and saw strong attendance. The Nature Center Lodge remained closed, but summer camp returned for its 40th year and the trails and Smith Woods were open and attracted lots of people eager to get out into nature. Our Collections staff continued to curate and digitize one of the largest fossil collections in the U.S., and to provide specimen loans and information to researchers around the world. Our own researchers continued

to explore a spectrum of important topics, from ancient biodiversity to mass extinction to conservation, and we continued to support and teach students at Cornell University. Our technical journal, *Bulletins of American Paleontology*, which began in 1895, published its 400th issue.

Events across the country and around the globe tell us more loudly than ever that understanding the Earth and its life is essential for the survival of our society. That means that what PRI does matters more than ever. PRI continues to increase understanding of the history and state of our planet, to audiences from preschoolers to postdocs, to produce new knowledge of the history of life and how it can be conserved amidst rapidly changing environments, and to preserve records of that history for posterity. PRI continues to do all of this because of the generosity of our supporters, who share our determination and commitment. Thank you!

Warren Allmon, PRI Director

Impact by the Numbers



4,212

Education program participants



1,202

Teachers trained



17

Specimen loans



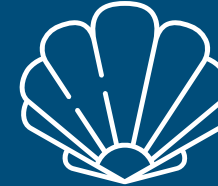
2,555

hours of free public trail access at the Cayuga Nature Center



10,368

Public Visitors to Museum of the Earth



3,941

Specimens accessioned



10

Peer-reviewed papers published by staff



2,678

Total volunteer hours



838,278

Web visitors across all platforms

Staff

Warren D. Allmon, **Director**
Maria Altier, **Visitor Services Associate**
Leon Apgar, **Museum Operations Specialist**
Katie Bagnall-Newman, **Associate Director for Nature Center Programs**
Maureen Bickley, **Museum Education Manager**
Helaina Blume, **Director of Exhibitions**
Gregory P. Dietl, **Director of Collections**
Dave Fass, **Website Manager**
Dana Friend, **Postdoctoral Fellow**
Brian Gollands, **IT Manager/Entomologist**
Michael Griswold, **Facilities Manager**
John Gurche, **Artist in Residence**
Don Haas, **Director of Teacher Programming**
Jonathan R. Hendricks, **Director of Science Communication**
Elizabeth J. Hermsen, **Research Scientist**
Dayna Jorgenson, **Director of Live Animals**
William F. Klose II, **Research Associate**
Catie Matteson, **Assistant to the Director**
Pam Millar, **Finance Associate**
Alexandra Moore, **Senior Education Associate**
Katelin Nelson, **Environmental Education Manager**
Amanda Schmitt Piha, **Associate Director for Philanthropy**
Maya Rodgers, **Integrated Marketing Manager**
Robert M. Ross, **Associate Director for Outreach**
Jaimi Shoemaker, **Associate Director for Operations**
Leslie Skibinski, **Collections Manager**
Chelsea Steffes, **Assistant to the Director***
Andrielle Swaby, **Director of Visitor & Retail Services**
Hannah Teush, **Volunteer Coordinator**
Nico Tutoni, **Visitor Services Associate**
Vicky Wang, **Collections Assistant**
Emily Weaver, **Education & Operations Coordinator***
Ingrid Zabel, **Climate Change Education Manager**

*colleagues who have moved on during FY21

Trustees

Nan Crystal Arens
Brian Bauer
Rob Beutner
Ann ("Nancy") Budd
Thomas Cronin
Susan Fleming
Greg Graffin
Linda Ivany
Michael Kamarck
Chris McRoberts
Beth Mielbrecht
Charlie Mulligan
Matt Pritchard
Ken Rother

Trustees Emeritus

John D. Allen
Bill Ausich
Loren E. Babcock
Peter Bardaglio
Philip Bartels
Larry Baum
Diana Boyer
James M. Cordes
Harold Craft
H. Allen Curran
Shirley K. Egan
William Engles, Jr.
J. Mark Erickson
Rodney Feldmann
Karl Flessa

Joanne Florino
Jim Fogel
Nelson Hairston
John Handley
Patricia Haugen Long
John Hermanson
Bob Horn
Bryan Isacks
Teresa Jordan
Patricia H. Kelley
Harry Lee
Harry Leffingwell
Rob Mackenzie
Amy McCune
Jean McPheeters
David Meyer
James Morin
Mary Opperman
D. Jeffrey Over
Katy Pearce
Edward Picou
Marvin Pritts
Philip Proujansky
Philip Reilly
Melzar T. Richards
Mary M. Shuford
Judy Terry Smith
Constance Soja
James E. Sorauf
Dale Springer
John C. Steinmetz
Peter B. Stifel
David H. Taube
Roger Thomas
Art Waterman
Don Wilson



3,238 hours of work contributed by college students from 12 schools.

In FY21, 15 unpaid interns contributed 2,338 hours (in comparison to FY20 when 10 interns contributed 1,184 hours). With the hours from work-study and paid interns (assistants) added, the contribution by college students during FY21 was almost 3,238 hours (compared to 2,471 in FY20).



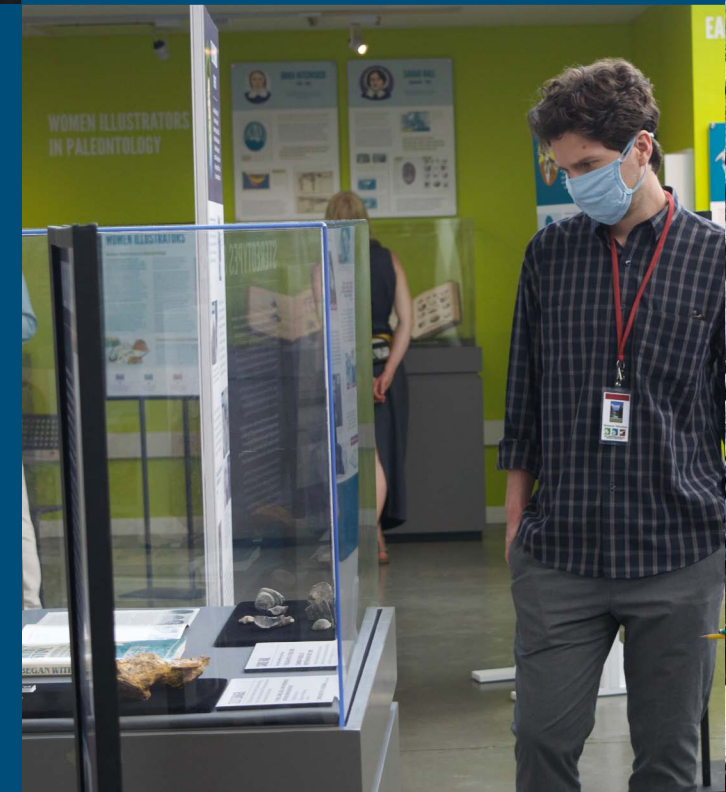
“This opportunity has allowed me to gain valuable knowledge about the widely expanding world of digitized collections.”

—Erin Fitzgerald, Collections Intern



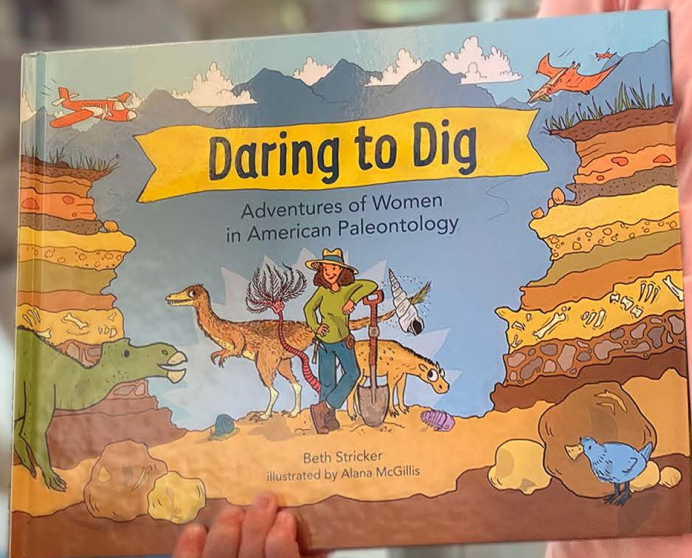
“Giving tours and making the exhibit [*Daring to Dig: Women in American Paleontology*] come alive for guests was a highlight of my time at the Museum of the Earth!”

—Josh Brosnan, Museum Docent





This year, our volunteers contributed 2,678 hours of work across our venues. PRI relies heavily on our volunteers, and while this past year has been difficult for everyone, we wouldn't have been able to do all that we have without their hard work and dedication to our organization.



A young visitor with a copy of the children's book "Daring to Dig," a companion to the temporary exhibit at the Museum of the Earth. "Daring to Dig" was written by former PRI Director of Exhibitions, Beth Stricker, and illustrated by Alana McGillis. Some of the illustrations from the book are featured in the physical exhibit.

PRI Publications

Publications constitute one of PRI's historic and core missions, and allow the Institution to reach an international audience of scientists, educators across the United States, and the wider public.

Into the Ordovician

In January 2021, PRI published *"Into the Ordovician: Adventures in a Prehistoric World,"* by staff members Andrielle Swaby and Jonathan Hendricks. This children's book, which was illustrated by Alana McGillis, introduced children to ancient life from the Ordovician Period of geologic history.

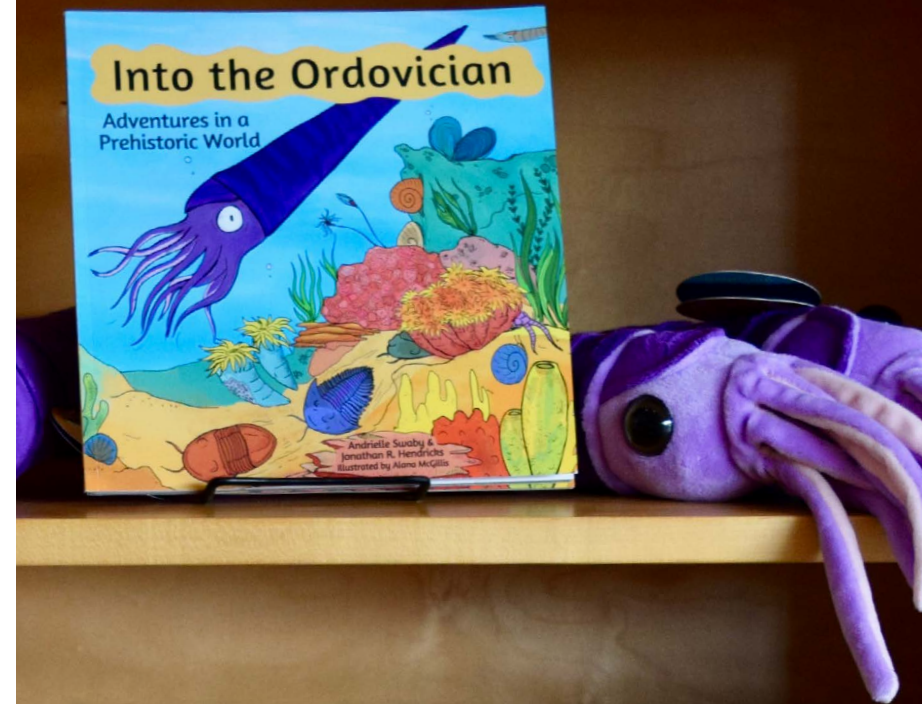
The first half of the book presents cartoon-style vignettes about major groups of organisms and life history events. The second half shows photographs of real Ordovician fossils (many from PRI's collection), and highlights paleontologists who study the Ordovician Period and natural places and museums where families can go to see Ordovician fossils firsthand. This book is also cross-marketed with PRI's new purple-colored, straight-shelled nautiloid Paleozoic Pal, which is featured on the cover and inside the book itself.

Bulletins of American Paleontology

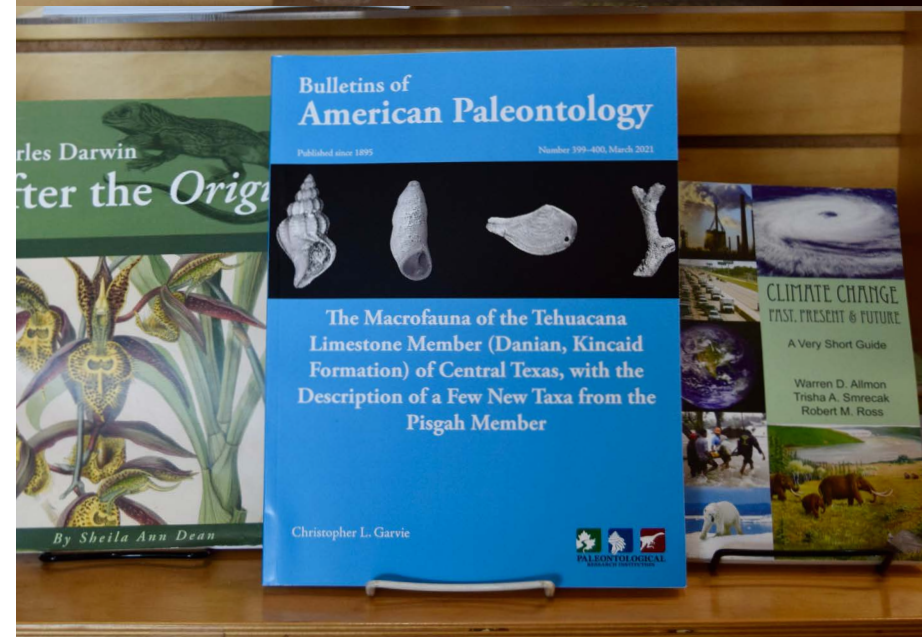
This year, PRI published the 400th issue of *Bulletins of American Paleontology*, which has been published since 1895.

399-400 The Macrofauna of the Tehuacana Limestone Member of Central Texas

Field work in Texas has led to the discovery of the most diverse marine fossil site yet known in the U.S. Paleogene. This fauna is within the Tehuacana Limestone, a member of the Kincaid Formation, and is of Danian age. The fauna differs from that of all other known Paleocene sites, in which just a handful of species occur in both the soft and hard substrate environments.



The nautiloid Paleozoic Pal pictured next to the companion book.



PRI published the 400th issue of *Bulletins of American Paleontology*.

Museum of the Earth welcomed 10,368 visitors from August 2020–June 2021.



We opened two major new exhibits in the Museum: a permanent exhibit about climate change and a temporary exhibit about women in American paleontology. Both exhibits launched with an online version, allowing many more visitors to view our content across the world.



The Museum was closed to the public from March to August 2020. Since reopening, we have slowly integrated in-person programming back into our schedule, and created accessible free days for the public.



New Exhibits

Warren D. Allmon Changing Climate: Our Future, Our Choice

In December 2020, we opened a new, permanent exhibit on climate change and energy. This exhibit lets visitors explore how the climate has changed in the past, ways in which we can learn about past climate change, the causes of modern climate change, and solutions that we can implement on societal and household levels.

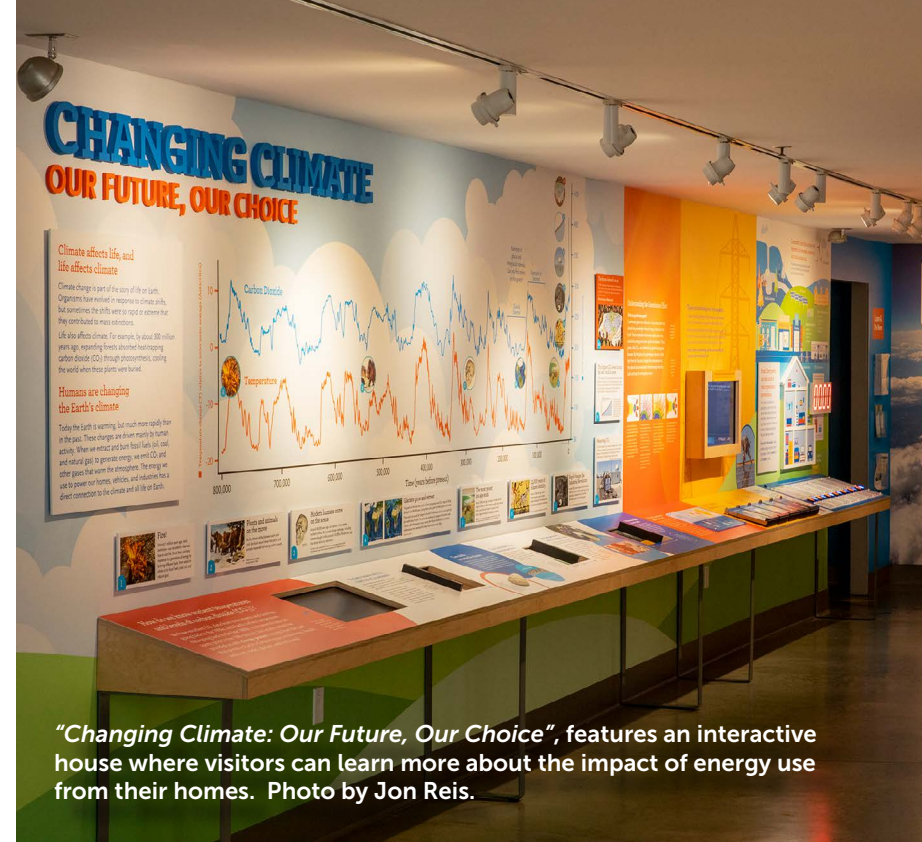
We also created an [online version of the exhibit](#), where visitors can find links to additional resources, including a K-12 Teacher's Guide to the exhibit, with suggested activities and discussion questions that teachers can use with their students.

The exhibit was named for PRI's Director, Warren Allmon, in recognition of his almost 30 years of service.

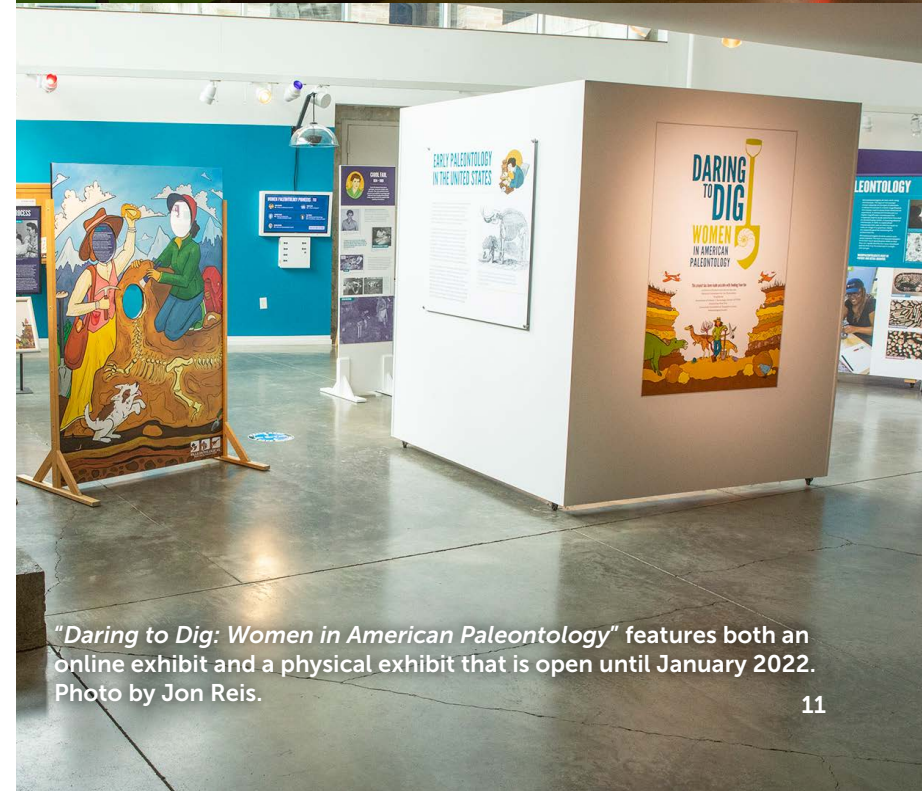
Daring to Dig: Women in American Paleontology

Daring to Dig: Women in American Paleontology is a temporary exhibit that opened in March 2021 and will be on display through January 2022. In addition, there is a companion online exhibit at www.daringtodig.org.

The exhibit explores the achievements, adventures, and discoveries made by women in American paleontology over the past few centuries. This exhibit also considers the personal and societal challenges that these pioneering scientists faced and examines their professional accomplishments in the broader context of the history of paleontology as a scientific discipline in the United States.



"Changing Climate: Our Future, Our Choice", features an interactive house where visitors can learn more about the impact of energy use from their homes. Photo by Jon Reis.



"Daring to Dig: Women in American Paleontology" features both an online exhibit and a physical exhibit that is open until January 2022. Photo by Jon Reis.



Reimagining Museum Learning Virtually

This year created a lot of challenges to Museum education, but we learned a lot along the way. We developed methods and bought equipment for virtual programs. Next year, we hope to return to our in-person programs but also expand our online and virtual presence. By doing so, we will get the benefit of speaking to and educating the public both present in the Museum and across the internet, thus expanding our audience.

In the past year, we served 794 Pre-K to college students in 52 paid virtual programs.

Kids Discover the Trail

644 students were reached in our first grade Kids Discover the Trail programs which runs from late February through early May. This year, we brought our first graders into the Museum virtually using pre-recorded videos and dropped off supplies. Then classrooms used Zoom to talk to Museum Education Manager, Maureen Bickley and explore rocks and fossils.



Other Virtual Programs

With the advantage of virtual spaces, we were able to reach a wider audience and ran programs at multiple libraries and with Boy Scouts of America. Our Boy Scout Merit Badge program consisted of 3 evening programs, connecting with over 50 scouts covering most of the United States. These three virtual programs were in connection with the Baden-Powell Council and part of the Merit Badge process for Geology, Archaeology, and Sustainability.

Ensuring Access for All

Pay-What-You-Wish Weekends

The Museum of the Earth launched a new community initiative in March 2021: Pay-What-You-Wish Weekend. Designed to bring accessibility to the community during a challenging year, visitors are able to choose their admission when registering for a ticket. This community program takes place the first Saturday and Sunday of each month.

With the generous sponsorship of BorgWarner, we are able to continue this community initiative into the new year and continue to create access to our Museum for all audiences.

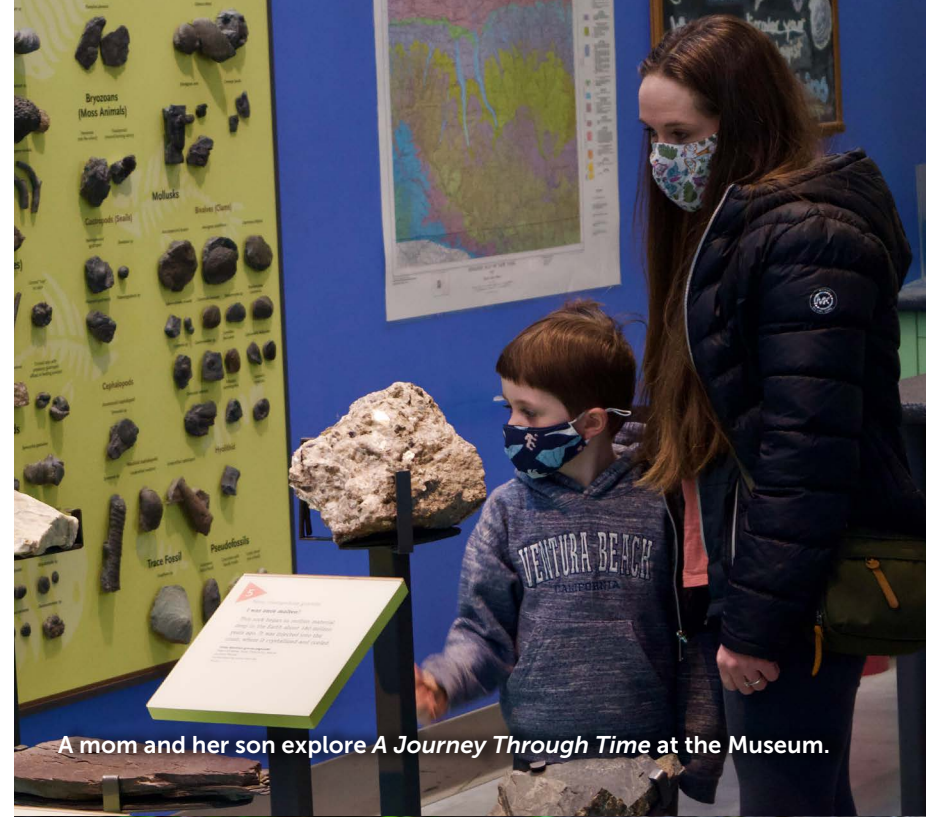


Young Naturalist Access Program (YNAP)

The [Young Naturalist Access Program](#) (YNAP) provides youth in need (5-17) free access to either a week of summer camp at the Nature Center or a one-year YNAP Youth Membership to PRI and both our public educational venues, as well as provides young people and their families/caregivers all of the benefits of a regular PRI membership plus free access to all of our ticketed events, such as Maple Fest and local Fossil Field Trips.

In 2021, YNAP covered 110 memberships for program participants.

Support for our YNAP program comes from:



A mom and her son explore *A Journey Through Time* at the Museum.



A Summer Camp counselor plays with a camper in the creek.

We provided 2,555 hours of free access to Cayuga Nature Center trails this year

While the Cayuga Nature Center Lodge has remained closed since March 2020, we continue to offer public access to our trails, thanks to support from Warren Real Estate.



Our educators launched a new program, "Eco-Explorers," that provided families with outdoor education opportunities with a different theme each week.

We held multiple group hikes through Smith Woods in the spring and summer.



We brought programs outside during the summer to show off our Animal Ambassadors. Each Saturday during the summer, we ran "Animal Ambassador Encounters" as an opportunity to provide animal programs to a wide range of audiences.



The return of Summer Camp

With no summer camp offered during the summer of 2020, the laughter of children in the courtyard was sorely missed. For summer 2021, changes were made with camp in order to comply with local and state COVID-19 restrictions, including opening camp at 70% capacity. Only Preschool Naturalists and Explorer Camp were offered, eliminating the half-day option for Preschool Naturalists and the Adventure Camps. This allowed counselors to work with smaller groups, and ensured the safety of campers and staff.

This year our Young Naturalist Access Program (YNAP) provided 49 campers with a free week of camp.





PRR Life Trustee, Marvin Pritts, hosted two Mothers Day hikes this year at Smith Woods. He spoke about the old-growth forest and led visitors on guided hikes.

Smith Woods Outreach

Henry A. Smith Woods is a 32-acre old-growth forest located just outside of Trumansburg, New York.

It is one of the largest remaining flat tracts of old-growth forest in Central New York. This small but spectacular place, with its enormous trees, dense forest canopy, and never-plowed ground, is a glimpse into the past. A walk through this small forested area may be the closest one can get in the region to experiencing a landscape that European settlers first witnessed. Old-growth forests are important both ecologically and culturally, providing a unique habitat and embodying local history.

This spring, Marvin Pritts led two Mothers Day hikes at Smith Woods. We also hosted a handful of hikes at the beginning of the summer.

Wildflowers at Smith Woods

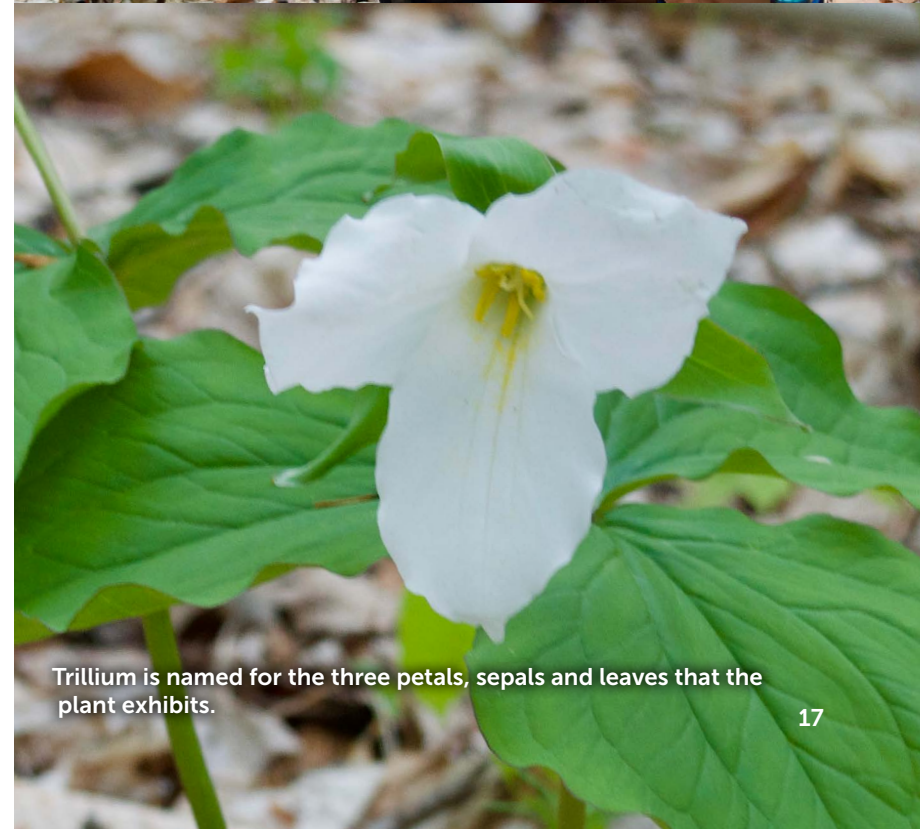
The forest is home to hundreds of plant and animal species. It is protected from the surrounding overabundant deer population with an 8-foot deer enclosure, which allows for forest regeneration and helps wildflower populations escape overgrazing. Most common are periwinkle, red trillium, trout lily, blue cohosh, and jack-in-the-pulpit.

“Every year at the end of April, I would frequently hike up the hill behind my childhood home to a wooded glen, eagerly anticipating the bloom of the white trillium that graced the steep hillside of that Pennsylvania mountain. That day of first bloom was almost as anticipated as Christmas because I knew that this marked the first days of true spring and that the countdown to the end of school had begun.”

—Marvin Pritts, PRI Life Trustee



A young hiker points to some Red Trillium during the Mothers Day hike.



Trillium is named for the three petals, sepals and leaves that the plant exhibits.

Collections accessioned 3,941 specimens.

PRI's Research Collection is the core resource of the Institution. This collection includes more than 7 million specimens and is among the 10 largest fossil collections in the US.



This year, staff finished the five year National Science Foundation funded Eastern Pacific Invertebrate Communities of the Cenozoic (EPICC) grant project, which digitized almost 320,000 fossil specimens.



Collections staff and volunteers are continuing work on the IMLS-funded Cornell Malacology grant project to increase public access to specimens in the former Cornell University Malacology collection of modern shells, transferred to PRI in 2018.



Cornell Malacology

In September 2019, PRI was awarded a \$93,450 grant from the Institute of Museum and Library Services (IMLS) to increase public access to specimens in the former Cornell University Malacology collection, which was formally transferred to PRI in 2018.

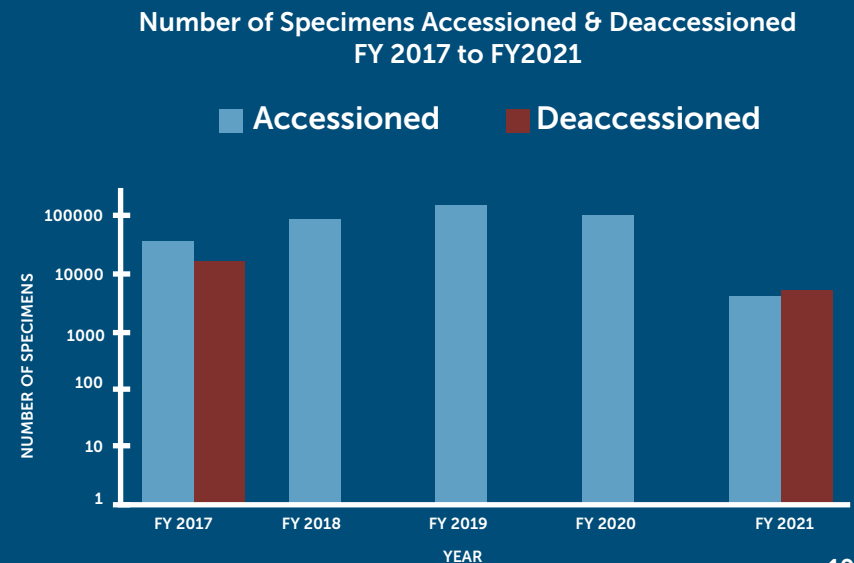
This grant funds the digitization of the collection, enables reboxing and labeling of specimens with archival materials, and physical integration of the collection with the existing PRI modern mollusk collection.

In the summer of 2020, staff and volunteers began imaging 17,000 original labels for the specimens collected in the 19th century. A year later, we are pleased to report that all of these fragile historical labels are now digitized, helping to ensure the longevity of these data and the scientific value of our collections.



An original label digitized as part of the IMLS-funded project.

A healthy, vibrant specimen collection is not static. It continually changes through growth (accessions) and contractions (deaccessions). A reasoned balance between these two fluxes refines a collection, keeps it in line with the mission of the institution and current scientific practices, balances available resources, and leverages the skills of the staff. FY21 was an unusual year in that we deaccessioned slightly more specimens than we accessioned. The respite from processing of new accessions provided collections staff opportunity to transfer numerous specimens not of research value (see figure, right) to the Education Department, which maintains its own Education Collection for public programming.





Cornell University

Cornell University Relations

PRI is a significant teaching resource for several Cornell programs and departments at both the undergraduate and graduate levels.

In addition, a number of Cornell courses require students to participate in exercises and training at the Museum of the Earth. Our collections and facilities are regularly used by Cornell faculty, staff, and, especially, undergraduate and graduate students for both research and teaching. PRI's Director, Warren Allmon, is the Hunter R. Rawlings III Professor of Paleontology in the Department of Earth and Atmospheric Sciences (EAS), a position he has held since 2008. Robert Ross, Gregory Dietl, and Jonathan Hendricks hold adjunct faculty appointments in EAS and Elizabeth Hermsen is a Visiting Scientist in the Plant Biology Section, School of Integrative Plant Science at Cornell.

PRI continues to contribute to Cornell's historic land-grant mission by facilitating public outreach in collaboration with various faculty and departments of the University, especially with EAS, and including several projects funded by the National Science Foundation.

Two generations of Cornell women paleontologists: Corrine Myers (Cornell '04) and Kiera Crowley (Cornell '22) during field work with PRI staff in Northern Mississippi in Summer 2021.

Research at PRI

Since its founding in 1932, research has been a fundamental part of PRI's institutional activity and identity. Today, PRI's scientific staff and affiliated Cornell students pursue primary research in a variety of areas related to the history, diversity, and evolution of life.

In Search of the Last Cretaceous Turritellid Gastropod

In June 2021, Director Warren Allmon and Associate Director for Outreach Rob Ross, Cornell alumnae Cori Myers and Carlie Pietsch, Cornell student Kiera Crowley, and other researchers did field work in Mississippi as part of an NSF-funded project. The team is studying how the world's oceans changed following the end-Cretaceous mass extinction, which is famous for the disappearance of non-avian dinosaurs. They investigated marine invertebrates, including clams, snails, and ammonites (relatives of octopus and squid), in order to better understand the ecological consequences of this enormous extinction.

Oyster Exhibit Research at Museum of the Earth

Director of Collections, Greg Dietl, Cornell PhD student Jaleigh Pier, and Cornell professor Jon Schuldt designed the temporary exhibit and research survey called *Conservation Paleobiology: Behind the scenes research at PRI* to investigate whether an exhibit can effectively communicate conservation paleobiology to the public. The exhibit introduces the Historical Oyster Body Size (HOBS) project, a collaboration between PRI and the Florida Department of Environmental Protection. It explains how researchers study buried oyster shells to understand historical oyster reefs, and how the data they gather can inform policy and restoration efforts today.

Passionflowers at Gray Fossil Site

Research Scientist Elizabeth Hermsen has been studying the diversity of fossil fruits and seeds from the 4.9 to 4.5 million-year-old Gray Fossil Site (GFS) sinkhole deposit in Tennessee, which is among a small number of Neogene (about 23 to 2.6 million years ago) plant fossil deposits in eastern North America. In 2021, she traveled to GFS to work in the on-site collections and published a new species based on fossil passionflower seeds (*Passiflora appalachiana*), one of few reports of fossil passionflowers worldwide.



Warren Allmon wraps fossils and take notes on a sand bar in Owl Creek, Mississippi.



The HOBS Oyster project exhibit at Museum of the Earth.



Purple passionflower (*Passiflora incarnata*) and a fossil seed of *Passiflora appalachiana*.



We reached 3,478 people through programming this year.

This year, most of that programming was via video conferencing, including both online school programs and presentations for the public such as [Science in the Virtual Pub.](#)



At the end of 2020, our online content had been viewed by more than 600,000 people, which is at least three times the number in 2019; at the end of the fiscal year, we had more than 800,000 online viewers. **We are within sight of serving 1 million people online in 2021.**



In addition, our outreach goes well beyond our own community, to sites around New York State (e.g., online programs and other presentations). Nationally, we are present at conferences and teacher workshops, reaching another 1,262 participants.



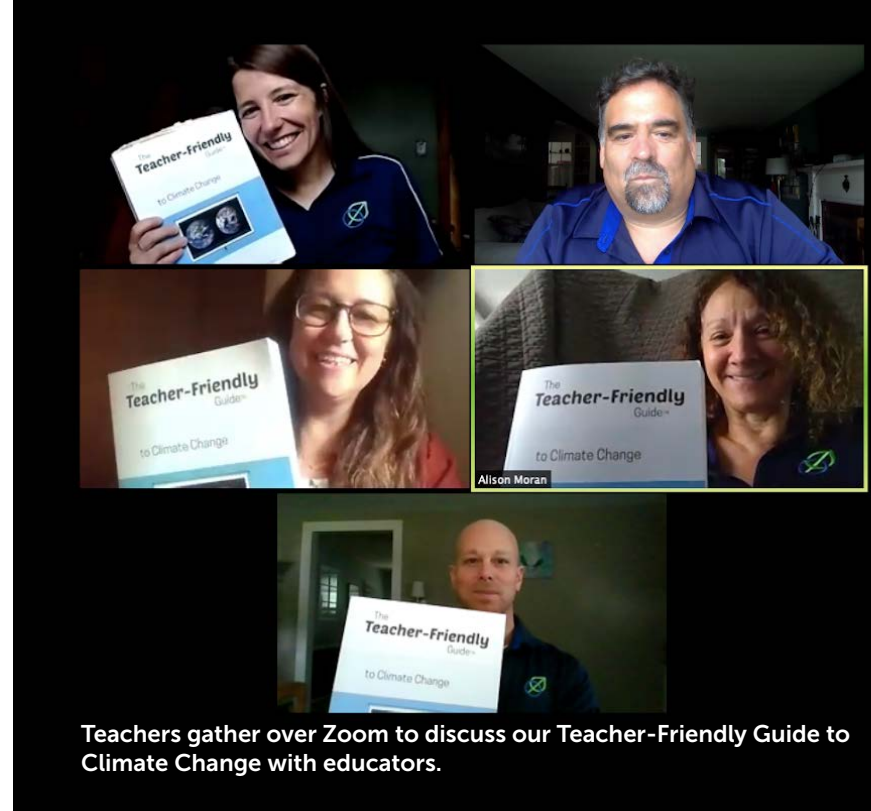
National Education Outreach

Teacher Workshops and Professional Development

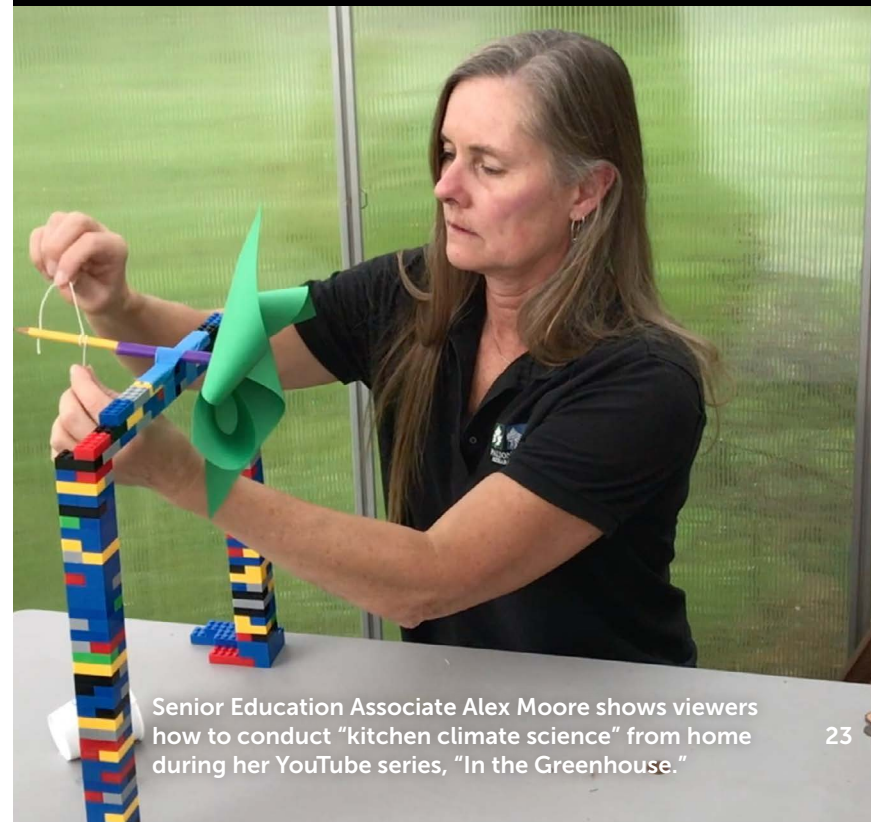
Schools in New York State and in much of the country suddenly halted in person instruction on Friday, March 13, 2020 and shifted to virtual instruction beginning the following week. The pandemic drove all professional development for teachers online and greatly accelerated the development of resources for use in online environments. Our education team hosted the first iteration of PRI's Educational Resources Introductory Webinar on March 23rd and repeated it on March 25th. Between our first online workshop in the pandemic on March 23, 2020 and June 22, 2021, we hosted 22 workshop sessions.

In the Greenhouse Video Series

The [PRI YouTube Channel](#) includes two playlists focused exclusively on climate change. Videos in the series "In the Greenhouse" each feature an experiment that illustrates a fundamental aspect of climate science, with connections to climate change solutions. The experiments are designed to use low-cost or readily accessible materials so that almost anyone could do them. There are two ways to use these resources: learners can watch the video and work with the data generated in the online experiment, or in many cases students can do the experiment themselves. The videos are supported by written materials and data sets that guide the discussion and interpretation of the experiment's results. To date, "In the Greenhouse" videos have cumulatively had more than 1,500 views.



Teachers gather over Zoom to discuss our Teacher-Friendly Guide to Climate Change with educators.



Senior Education Associate Alex Moore shows viewers how to conduct "kitchen climate science" from home during her YouTube series, "In the Greenhouse."

Open Education Resources

This past year, educators all across the world were finding new ways to adapt to online classrooms.

Our websites have been visited by **838,278** users this fiscal year.



The [Digital Atlas of Ancient Life](#) is PRI's most used online resource and provided critical content for educators and students during the pandemic.

During FY21, over **352,000** users from nearly every country on Earth visited the website, spending a combined **11,750** hours interacting with Digital Atlas content.

Earth science. For free. For you.

[Earth@Home](#) was publicly launched by PRI on August 24, 2020. This new Open Education Resource website will eventually become a "one stop shop" for educators and students in the United States to learn about the Earth where they live.



Earth@Home

Development of Earth@Home is part of PRI's current five-year strategic plan. Much of the content for Earth@Home is being redeveloped and updated from PRI's successful Teacher-Friendly Guides to Earth Science series, as well as the Teacher-Friendly Guide to Climate Change. Explore Earth@Home at www.earthathome.org.

The major components of this new platform include:

Here on Earth: The "Here on Earth" regional guides to Earth science will encourage website visitors to learn about their local geology and natural environment right outside their back door.

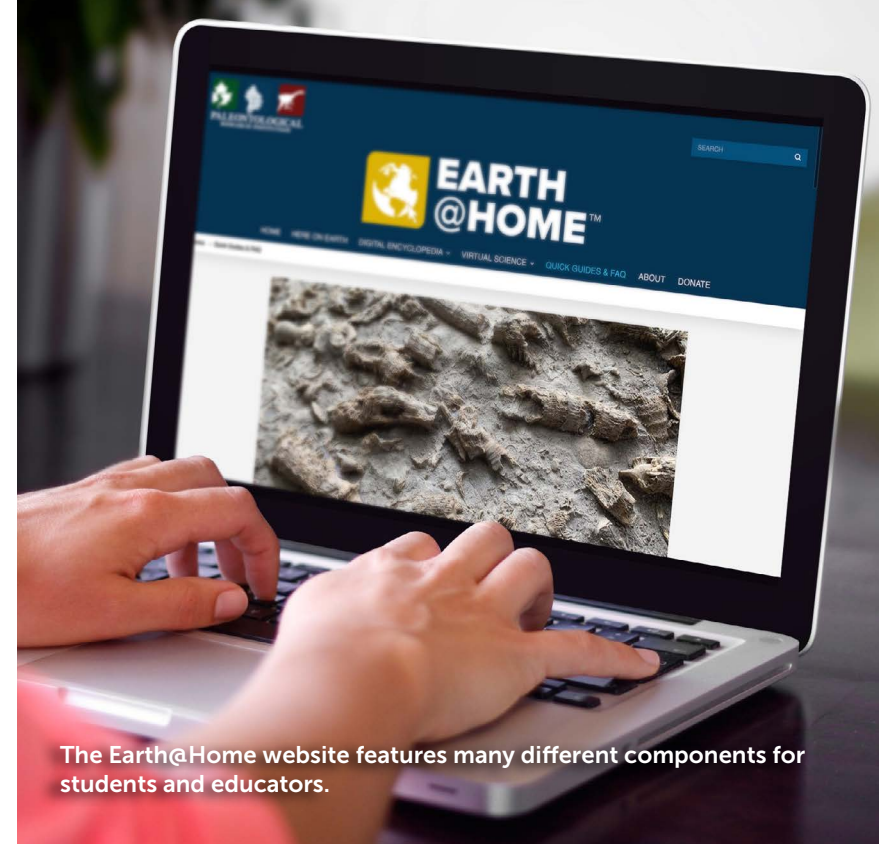
Digital Encyclopedia of Earth Science: A free, online, open-access textbook, designed to provide accessible introductions to core topics across the Earth sciences.

Virtual Fieldwork: Virtual Fieldwork Experiences (VFEs) can offer opportunities to explore sites that are not practical to travel to in person.

Finding innovative ways to support the education community has been an important priority for PRI for over two decades, but has become the focus of considerable effort since the pandemic began

"[PRI] is doing so much to help all teachers transition to online learning. Their amazing 3D renderings of fossils were THE reason I was able to continue to meaningfully teach my courses in Paleontology and Earth, Time, and Life this semester. Their Virtual Field Trips are state of the art! Please support their mission—which will help us all continue to teach about the Earth!"

—Carlie Pietch, Professor at San Jose State University



The Earth@Home website features many different components for students and educators.

Digital Encyclopedia of Earth Science

Welcome to our free, open-access Earth science textbook.

Over the next several years, the Digital Encyclopedia of Earth Science will grow to cover most Earth science topics. Initial subjects covered include big ideas, minerals, fossils, climate, and climate change (links below).

Please subscribe to our email newsletter for regular updates regarding additions to the Digital Encyclopedia.

Chapters coming soon: Rocks; Plate Tectonics

Earth Systems Science

The Big Ideas



Donors

Darwin Society \$10,000 +

James Morin and
Myra Shulman

D. Jeffrey Over

Devonian Society \$5,000–\$9,999

Brian and Lori Bauer

Cayuga Society \$2500–\$4,999

Anonymous

Merle Adelman and
Ron Menner

Warren Allmon and
Jennifer Tegan

Roald and Eva B.
Hoffmann

Catherine Penner

Judith Terry Smith

Jan and Susan Suwinski

Roger D. K. Thomas

Gorges Society \$1,000–\$2,499

John Allen and
Ann Callaghan

Larry and Beth Brown

Thomas Cronin

H. Allen and Jane Curran

William R. Engles, Jr. and
Emmeline S. Chang

Marcia and Kirk Field

Susan Fleming

Allison and Greg Graffin

John Handley and
Kym Pocius

David Heidemann and
Beth Fischer Heidemann

Margaret A. Hendricks

John W. Hermanson and
Lynn Swisher

Linda Ivany and
Bruce Wilkinson

Teresa E. Jordan and
Richard W. Allmendinger

Shirley K. Egan

Nan Crystal Arens and
David Kendrick

Howard and
Harriet London

Edward Machak

Peter and Mary
Beth Marks

Charlie Mulligan

Gilbert Norris

Edward B. Picou Jr.

Mary Lou Pojeta

Matt Pritchard and
Rowena Lohman

Melzar T. and
Jane Richards

Peter B. Stifel

Emily Vokes

Leslie Wilkes

Don and Dolly Wilson

Gene and Jeanne Yarussi

\$500–\$999

Anonymous

Richard Allen and
Anke Wessels

William Ausich

Robert Beutner

John David Bukry

Jim and Terry Byrnes

Rodney M. Feldmann
and Carrie E. Schweitzer

David Fernandez and
Elizabeth Lawson

Joanne V. Florino

Russell Fuller

Bob and Joan Horn

David McCormick

Amy McCune

David and Kani Meyer

Beth Mielbrecht

Ken Rother and
Michelle Kortenaar

Fred and Margaret Sibley

David and Marisue Taube

Joe and Marney Thomas

David Weinstein and
Christina Stark

\$250–499

Anonymous

Ellen Avril

Wrexie and
Peter Bardaglio

Larry and Trudy Baum

Susan Blumenthal and
David L. Kreinick

David Bottjer

Diana Boyer

James and
Lisken Cordes

G. Walton and
Jean Cottrell

David B Couch

Ted Daeschler

Tom and
Barbara Dimock

Charles Geerhart	Peter T. Wolczanski	Ann Budd	Caitlin Darfler	Janet Hawkes	Susan Larkin
Bryan L. Isacks and Marjorie Olds	Up to \$249	James and Theresa Bugh	R. Jeffrey Dean	Carole Hickman	Mark Leckie
Dale Johnson	John Abel	Clay Bullers	Lynn Deuschle	Thomas Hirasuna and Jean Hunter	Lynn B. Leopold
Daniel Karig and Joane Molenock	Mark Aldrich	Derek and Nora Burrows	Frank and Barbara DiSalvo	John W. Hoffman	Alan Leviton
Egbert Giles Leigh Jr.	Brendan Anderson	Joseph Caezza	Peter Dodson	Elinor Hoffmann and Julian Sosner	Bruce and Claudia Lewenstein
Peter and Susan LeVangia	Stacey Atheras	Sandy J. Carlson	Kathy Dolson	Thomas Hohn	Te-Wen Lo
Daniel Mackenzie	Renee Aubry and Michael Rodriques	Jackie Cassaniti	J. Mark Erickson	David and Barbara Holowka	James Loehr
Catherine McCarthy	Kip Ault	Brian Chabot and Kathleen Rasmussen	Douglas Erwin	Katharine Hunter	Tiffany Long
Jean and Daniel McPheeters	Loren E. Babcock	Manon Lu Christ	Paul Feeny and Mary Berens	Nancy Hwa	Anne Lutz
Christopher McRoberts	William and Andrea Barnett	Karen Christensen and Jeff Lawton	Donna Fleming and Frederik Kaufman	Thomas Jackson	Robert Magee
Jim Parmentier	Donald Barree	Leam Cika	Lucy Gagliardo	Jean Jagendorf	Ronald Martin
Ritchie Patterson and Lawrence Gibbons	Judith and Nancy Barringer	Bruce Cobb	Dana Geary	Jean Jagendorf	George McIntosh
Katy and Art Pearce	Tiffany Bartz	Nancy Coddington	Gregory Getman	Lucia and Georg Jander	Peter P. McLaughlin Jr.
Katherine Pharibe Wise	Dr. Stig Bergstrom	Phoebe Cohen	Lisa Ginet	Emilie S. Kane	Phil and MaryLu McPheron
Marvin P. and Allison Pritts	Janice Beutner	Greg Coniglio	Aaron Godert	Bill Kappel	Susan Merkel
David J. Schuller	Debbie Bilinski and Ken Miller	Nate Cook and Nicole Allen Cook	John Gorski	Peter and Mary Katzenstein	Nicholas Metz
David Shmoys and Eva Tardos	Danielle Brant	Charles Courtney	Mary and Bradley Grainger	Bettie Kehrt	Carol and John Morris
Mary Shuford	Peter Brellochs	Hazel Cramer	Lee Gray	Caroline Kerr and Dick Warner	Vincent Mulcahy and Cynthia Livermore
Roger and Carole Sibley	William and Heather Brice	Jonathan and Marnie Cryer	Donald and Eilene Guy	Karen Kleinspehn	Lilly Murphy
Charles Ver Straeten	David Brittain	Nancy Currier	John Harper	Mary Sue Krause	Patricia Nardone
Mark Wilson	Karen Brower	Stephanie Cybulski	Whitney Harper	James Kremmerer	Mary O'Leary
	James O. Brown	Victoria Dake	Martin and Susan Hatch	Donald Kress	Teresa M. O'Neill
				R. Carolyn Lange	Jennifer Olori

Cal and Joan Organ	Donna Scott	Eric Taylor	Lisa Ginet and Bob Spatz in honor of James Beech	Patricia Welch in memory of Lenore Taylor Durkee	Legacy Foundation of Tompkins County
Gail Osberg	William Edward Senn	David Thurber			Marvin and Annette Lee Foundation
Klaus Paasche	C. Daniel Shulman	Margaret Toro	Susan and Tim Larkin in honor of Jean McPheeters	Jean and Dennis Perri in memory of Lenore Taylor Durkee	Park Foundation Robert G. and Jane V. Engel Foundation
Rosemarie Parker and Sol Gruner	Ross and Elynn Simons	Charles and Nancy Trautmann			
Ronald Parsley	Harry Singer	Carol and Mack Travis	Charlie Trautmann in honor of Warren D Allmon	Mary Lou Pojeta in memory of Dr. John Pojeta	The History Center in Tompkins County
Jean Perri	Michael Smith	Rebecca Vallely			
Caroline Peterson and Michael Bergren	Jeffrey and Suzanne Snedeker	Barbara Van Dyk	Patricia Nardone in honor of Charles Darwin	Murray and Dale Johnson in memory of Lenore Taylor Durkee	Tompkins Charitable Gift Fund
Elizabeth Petsios	Dale Springer	Gurdon Van Hamlin			
Michael Pinnisi and Paige Anderson	James Sprinkle	Raymond Van Houtte	The Weinberg Family in honor of Maureen Bickley	Business and Organizational Support	Tompkins County Tourism Program
Amanda and Isaac Piha	Roger Stern and Carmela Merlo	Victor K. Vere		Anonymous	Triad Foundation
Emma Sheikh	Carl and Judith Stock	Virginia Vest	Gifts in Memory		
Mariana and John Rhoades	Laura Stockton	Arthur Waterman	Mark Aldrich in memory of Michele L. Aldrich	Amazonsmile Foundation	Vector Magnetics Fund at the Community Foundation of Tompkins County
David Ritchie	Marsha Stout	David Weinberg		BorgWarner Morse Systems	Wegmans Food Markets
Susan Ritter	Katie Stower	Patricia Welch	Raymond C. Van Houtte in memory of Raymond A. Van Houtte	Community Foundation of Tompkins County	In-Kind Gifts
Diane Robertson	Steven Strogatz and Carole Schiffman	Bruce Wiley			
Mark Robson	Ralph Willoughby	Roger D. K. Thomas in memory of Erle G Kauffman		ConocoPhillips Matching Gift Program	Cornell University
Mariana Wolfner and James Rothenberg	Alan Falk and Laura Winter Falk	Diane and Jack Robertson in memory of Lenore Taylor Durkee		Cornell University	Nan Crystal Arens and David Kendrick
Carolyn Sampson	Nicholas Sullivan	R. Timothy Wolcott		Damiani Winery	Mariana and John Rhoades
John Schere	David Sunderlin	Jenn Yoshioka		Genetech Matching Gift Program	
Edith Schmeiser	Michael Brett Surman	Joel and Cathy Zumoff		GiveGab	Ruth Norton
Philip Schuster	Mark and Ellen Sussman		Anna and Kate Stalter in memory of Lenore Taylor Durkee		University of Kansas
Robert W. Scott	Helen Talty	Gifts in Honor		IBM International Foundation Matching Grants Program	Marvin P. and Allison Pritts
	Emiliya Taskova	Tiffany Bartz in honor of Maureen Bickley	William Edward Senn in memory of Lenore Taylor Durkee		
	Nathan and Jennifer Tavares				

Robyn and Steve Schmitt	Lana Abdul-Aziz	Vernon Edwards	Jenna Letersky	Roberta Rogers
Wende Logan-Young	Neldon Adams	William R. Engles, Jr. and Emmeline S. Chang	Caitlin Loehr	Jen Rygel
Restricted Gifts \$10,000+	Jabari Adams	Krista Foerster	Jennifer Lyons and Michael O'Neill	Amanda and Isaac Piha
Anonymous	Paul Agle	Lisa and Chris Ford	Maria Maldonado	Robert Sholl
Gordon and Carol Baird	Robert Allers	Michael Freedman	Donna Mallen	Harry Singer
Philip and Susan Bartels	Wilbur Avant	Jessie Friedman	Timothy Martinson and Joanna Lynch	Judith Terry Smith
Peter and Ursula Browning	Nancy Baker	Allen Fronabarger	Michael McArthur and Sophie Alexander	Yitong Song
Michael and Debbie Kamarck	Susan Bettis	Tatiana Gaona Narvaez	Joel and Jean McCormack	Anna Stalter
James Morin and Myra Shulman	Maureen Bickley	Joshua Goldman	Lysa McCrorie	Mary Storelli
\$5,000 - \$9,999	Diana Boyer	Daniel Goodman	Meloney McMurry	Marina Suarez
Warren Allmon and Jennifer Tegan	Kelsey Brewster	Don Haas	Mariah and Jake McNamara	Regi Teasley
Heather and Bruce Lane	Ann Budd	Sandra Hale	Christopher McRoberts	Julie Thayer
D. Jeffrey Over	Annabelle Cambier	Caprice Harrold	Beth Mielbrecht	Laura Virga
Matt Pritchard and Rowena Lohman	Sandy J. Carlson	Dave Hattorimanabe	Pam Millar	Peter von Kamecke
\$2,500-\$4,999	Kevin Carney	Jonathan Hendricks and Elizabeth Hermsen	Ben Montgomery	Elyse Wadsworth
Leslie Wilkes	Jenna Casey	Jeffery Hopper	Daniel Navarro	Vicky Wang
\$1,000-\$2,499	Mark Caudill	Katherine Houpt	Siabh Odonnell Oneill	Dani Wilburn
Roger D. K. Thomas	Virginia Clark	Jerry Hunley	Charles Ohlendorf	Richard Wilkens
Catherine and Michael Whalen	Bryan Cockel	Jane Jorgenson	Janaki Parthasarathy	Rebecca Woodward
Up to \$999	Phoebe Cohen	Shirley K. Egan	Sofia Pereira	Ingrid Zabel
Anonymous (2)	Val Comstock	Corynne and Matt Kaskela	Cyndy Piha	Richard Zerbe
	Amado Cordova	Nan Crystal Arens and David Kendrick	Pitipong Rodkumnerd	

Our Mission

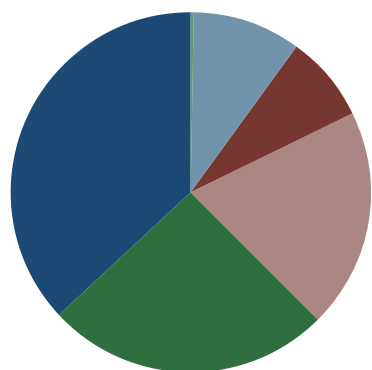
Utilizing its unique collections, staff, physical facilities and digital presence, the Paleontological Research Institution pursues and integrates education and research, and interprets the history and systems of the Earth and its life to increase knowledge, educate society, and encourage wise stewardship of the Earth.

Associate Director for Outreach Robert Ross leads a gorge walk at Taughannock Falls State Park.

Financials 2021

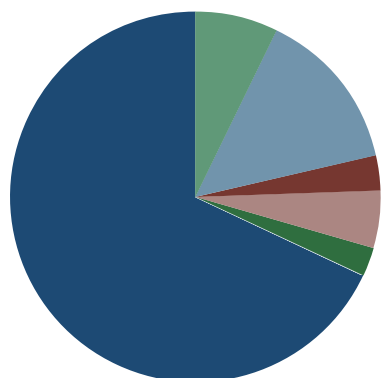
Due to the pandemic, PRI applied for and received Federal Payroll Protection Funds. The funds were used to cover payroll, benefits, and utility expenses for the period February 2021 - April 2021. The pandemic has also postponed the annual audit, so financials shown here are unaudited.

Revenue \$2,573,394



Other Revenue	\$8,385
Earned Revenue	\$249,692
Funds Functioning as Endowment	\$203,637
Grant Revenue	\$505,406
Gifts Released from Restriction	\$661,843
Unrestricted Giving and Membership	\$944,432

Expenses \$2,573,394



Building and Maintenance	\$186,770
Other	\$364,500
Professional Fees	\$79,000
Interest Expense	\$131,471
Grant Subcontract Expenses	\$63,620
Exhibit Expenses	\$2,000
Payroll and Related Benefits	\$1,745,957



1259 Trumansburg Road
Ithaca, NY 14850
www.priweb.org



Front cover photographed by Jon Reis